

# Rush RPA Annual Report 2022



Rush Recreation and Park Association  
January 1, 2022 to December 31, 2022

# 2022 Directors and Advisors

## Board of Directors

Marianne Rizzo, President  
Janet Chaize, Vice-President  
Pamm Wait, Treasurer  
Carol Barnett, Secretary  
Kathryn Hankins  
Jack Mould  
Paula Smith

## Advisors

Bruce Howlett, Howlett Farms  
David Kunsch, Prof. St. J. Fisher & Forester  
Steve Leupold, Lifelong Tree Planter

## Message from the President

In the Rush Recreation and Park Association, we take the long view. We begin by planting seedlings, trees and grasses in this generation, knowing that we will never see full fruition in our lifetimes. We plan for our community through stewardship.

We are mindful of walking into the next generation with our young people. It is our hope that we can sustain and inspire them to contribute to our town, our region, and our world. This mission has been passed to us and now we hope to inspire others to care and act.

The Rush RPA would like to thank its volunteers and supporters for their contributions, their inspiration, and their belief in our organization and in our collective efforts.

# Thank You to our Members, Volunteers, and Donors

The heart of our non-profit association are the many people of all ages who have contributed funds, knowledge, labor and materials to develop and implement our many projects and activities.

In 2022 we also had the support of many groups and organizations, and sponsored many events that will be expanded in 2023.



Ann McMican leading a Bird Walk  
at the Hundred Acres Park

# Treasurer's Report

## Statement of Activities For the Twelve Months Ending December 31, 2022

### Revenue

Memberships	\$ 2, 110.00
Donations-Memorial Tree (2)	<u>150.00</u>
Total Revenue	\$ 2, 260.00

### Expenses

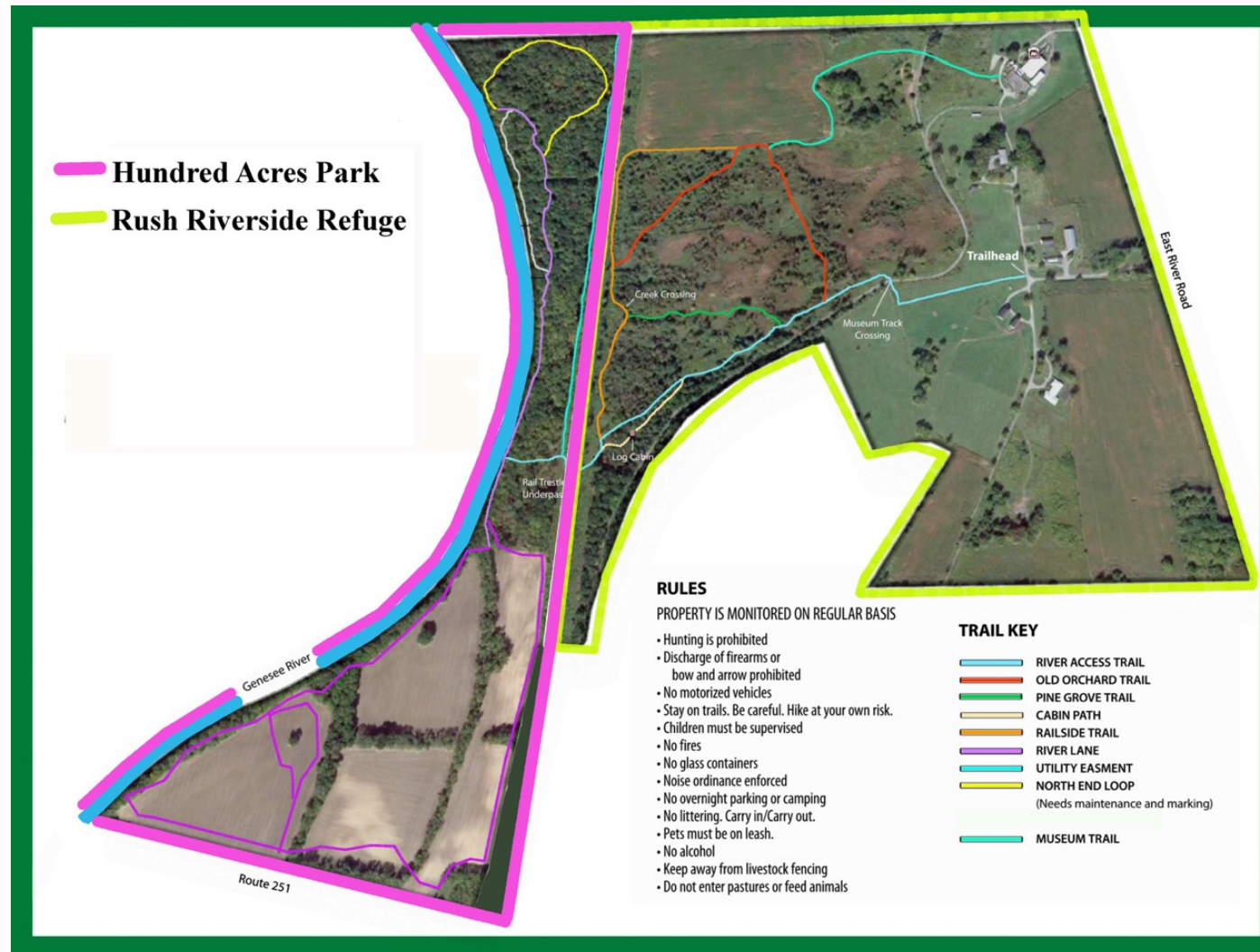
General & Administrative	\$ 356.71
Insurance	365.00
Shrubs/bushes	479.00
Equipment (wheelbarrow)	239.99
Tree-Rush Library	149.99
Tree Fencing/Stakes	1,141.31
Mulch	<u>900.00</u>
Total Expenses	\$ 3,632.00

Net Assets At Beginning of Year      \$ 12,292.30

Net Assets At End of Year                \$ 10,920.30



# Hundred Acres Park on the Genesee River



# Hundred Acres Park

Much progress made to implement the development plan approved in 2019.

Highlights:

- ❖ Planting projects: 103 Trees and Shrubs planted in fall of 2022

- ❖ Educational nature tours:

  - Open house with focus on native plants to attract pollinators

  - Guided walk on forest invasives

  - Bird watching at the park





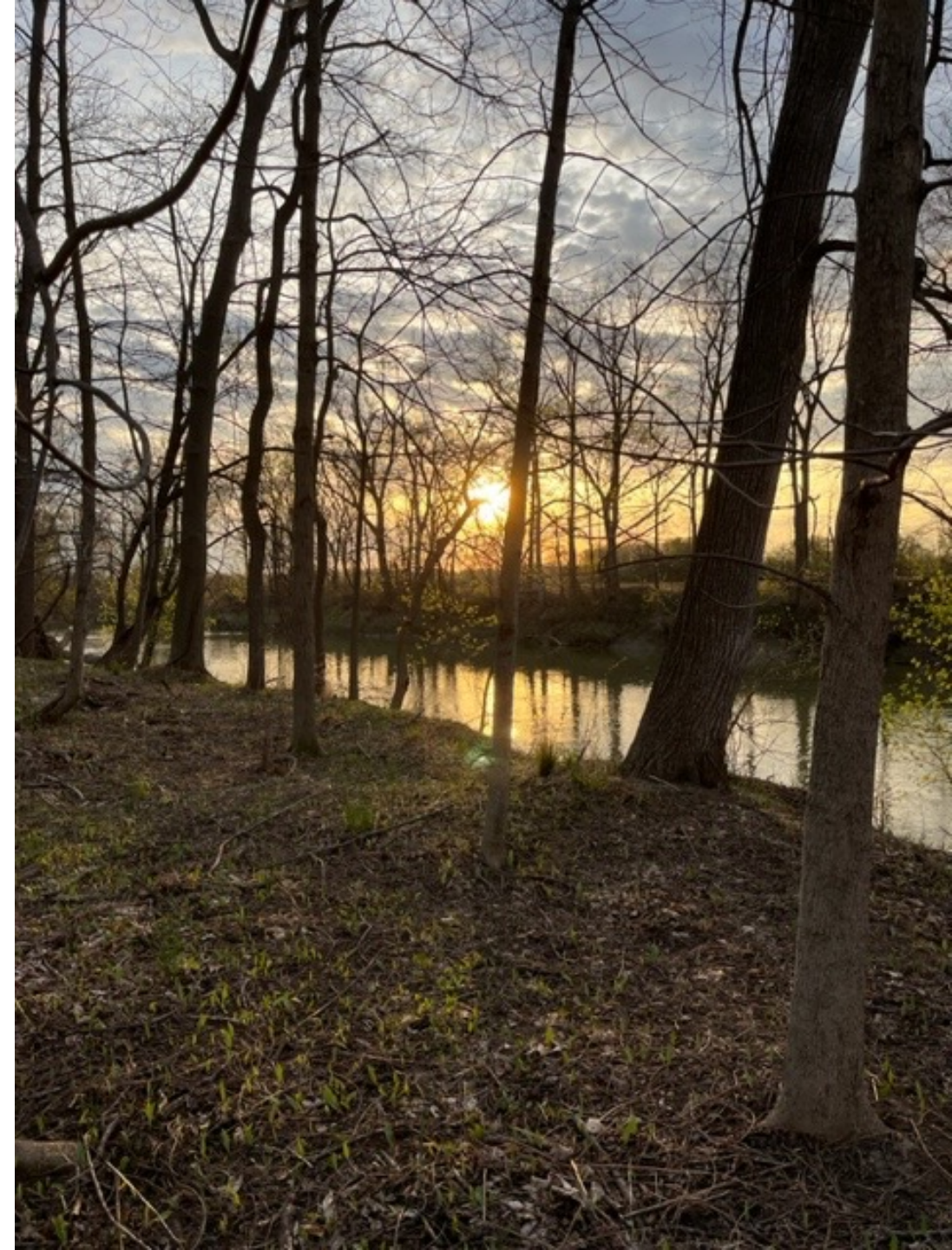
# Educational Tours Nature Walks Work Parties





# Special Projects and Townwide Initiatives

- ❖ Community-Wide Clean-Up and Earth Day Observance
- ❖ Arbor Day Proclamation and Celebration
- ❖ Fall Festival Community Education
- ❖ Trees planted and maintained in town campus, including tulip tree in memory of Joan Starkweather, longtime Rush librarian
- ❖ Tree Protection Ordinance Passed
- ❖ Liaison to Local Waterfront Revitalization Program
- ❖ Financial Impact Report to town documenting tax savings from Rush RPA activities





# Community Partners

- ❖ NYS Department of Environmental Conservation
- ❖ Monroe County Soil and Water
- ❖ Sierra Club
- ❖ Finger Lakes Institute
- ❖ Rochester and Genesee Valley Railroad Museum
- ❖ Rush Historical Society
- ❖ Rush Public Library
- ❖ Girl Scouts and Boy Scouts





# Town Gardens

For four years, the Rush RPA has provided the leadership and coordination to care for the town's 13 gardens, saving taxpayers more than \$5,000 a year.

Each year, the Rush RPA recruits more than 20 volunteers to prepare, plant and care for the gardens. Each garden is unique, with volunteer gardeners contributing their creativity.





***“Nearly 40 years of research evidence confirms that nearby nature, including parks, gardens, the urban forest and green spaces, support human health and wellness.”***

**[www.nrpa.org/parks-recreation-magazine/2017](http://www.nrpa.org/parks-recreation-magazine/2017)**



Oak tree planted at Rush town campus, near Rush Town Hall and Rush Public Library, in 2021.

# Thank you!



View of Town of Rush "Campus" from vantage point of oak tree planted by Rush RPA